

WE MOVE THE FACADES.

Since 1988, BeluTec has been developing and producing individual door and facade systems at the Lingen plant in Emsland. From advice, conception and planning as well as installation and maintenance - behind all this is a strong team of technicians, project managers and experts with many years of experience in the field of door systems and facades.

BÜNDIG

„Bündig“ - Flush –
The architectural magazine.

Visit our
buendig.blog



COMPETENCE FROM ONE SOURCE



Innovative door & facade systems

Folding Systems | Sectional doors
Facade-flush doors
Industrial doors | Garage doors

100% MADE IN GERMANY



FLUSH GATES



FOLDING SYSTEMS
OUTDOORS



FOLDING SYSTEMS
INDOOR



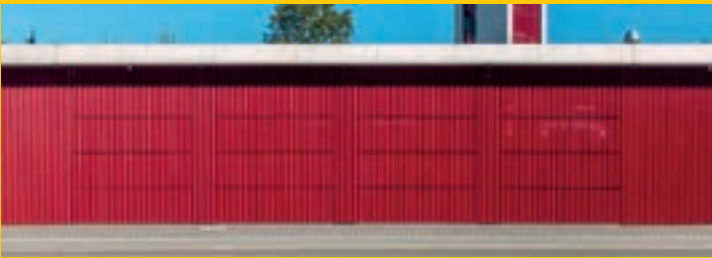
SIDE SECTIONAL DOORS



INDUSTRIAL DOORS

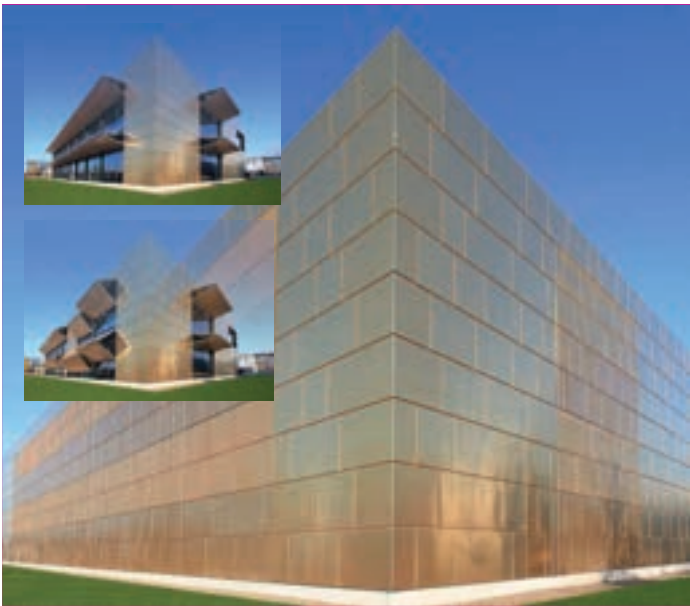


GARAGE DOORS



INNOVATIONS

- ° Telescopic facade elements with photovoltaic modules
Energy-producing sun protection
- ° Flush sliding folding shutters
Sun, heat and burglary protection - all in one facade



Belu Tec Vertriebsgesellschaft mbH
Am Seitenkanal 3
49811 Lingen (Ems)
Tel.: +49 591 912040

